



**LIVERMORES**  
THE ESTATE AGENTS

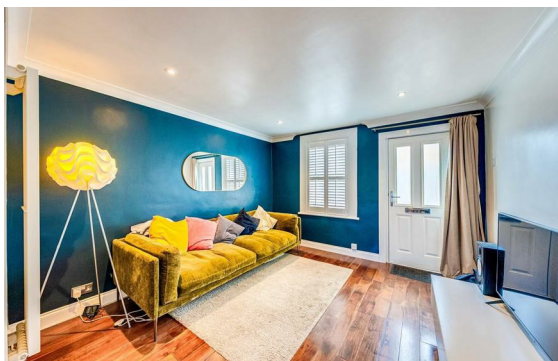
3 Bedrooms  
House - Terraced  
Located in Dartford  
**£350,000**



[dartford@livermores.co.uk](mailto:dartford@livermores.co.uk)

[www.livermores.co.uk](http://www.livermores.co.uk)

01322 228090



Guide Price £350,000 - £375,000.

Offered to the market chain free, this well-presented three-bedroom terraced home occupies a sought-after position on Dartford Road and presents an excellent opportunity for first-time buyers, growing families, and investors alike.

The property has been maintained to a good standard throughout and offers bright and spacious accommodation, with a welcoming living area, a fitted kitchen, and three well-proportioned bedrooms. Externally, the home benefits from a sizeable rear garden, providing ample space for outdoor entertaining, family activities, or future landscaping potential.

## Energy Efficiency Rating: C

Agents Note: Whilst every care has been taken to prepare these particulars, they are for guidance purposes only. All measurements are approximate and are for general guidance purposes only and whilst every care has been taken to ensure their accuracy, they should not be relied upon and potential buyers/tenants are advised to recheck the measurements.

**LIVERMORES**  
THE ESTATE AGENTS

1 Hythe Street  
Dartford  
Kent  
DA1 1BE

01322 228090

[dartford@livermores.co.uk](mailto:dartford@livermores.co.uk)

[www.livermores.co.uk](http://www.livermores.co.uk)